



ONE COIN

THE ONECOIN LEADERSHIP  
PROGRAM

July 2015



# LEADERSHIP PROGRAM: DESCRIPTION



## Our Leadership Program is exciting, rewarding and fun!

By kick starting your career with OneCoin, you get the opportunity to get recognized along the way for your **excellent achievements**. Climbing the leadership ladder, sets you off as a Sapphire and at the very top you receive the **Crown Diamond Rank**.

Ranks are an important **measure of your success** with OneCoin and you will understand how powerful the ranks are when you are setting goals and targets for yourself and your personal team. This makes the program both fun and very rewarding.

**Develop your team** and grow stronger together. We want you to become the leader you always dreamt to be and to support your personal team all the way to the top!

Best Regards,

The OneCoin Team

# LEADERSHIP PROGRAM: HOW DOES IT WORK



- The Leadership Ranks are generated and updated **each month**
- The Business Volume (BV) represents the total sum of the left and right leg in your **Personal Organization**
- In order to achieve a good rank you need to develop and build a **balanced organization**, both in your left and right leg
- In order to achieve the next rank you need to develop both sides of your organization, meaning that you need to duplicate your sales, since the **Matching Bonus** potential gives advantage to those members, who expand their personal organization. To achieve higher ranks, you will also need to develop a number of new leaders in your structure as described in the Recognition Reward Table

Please, refer to the **Recognition Reward Table** for detailed information regarding Qualifications and Terms

# LEADERSHIP PROGRAM: WHAT CAN I ACHIEVE



- Leadership Ranks are achieved based on qualifications described in the Recognition Reward Table
- Equal start – all start with the lowest rank, Sapphire, and aim to achieve the highest one - Crown Diamond
- Equal opportunity - to participate in the Leadership Program, you have to be Matching Bonus qualified. The Matching Bonus is a powerful tool, part of your overall bonus strategy that will help you grow your team and make you successful

# LEADERSHIP PROGRAM: RANKS



---

Leadership Award:	Sapphire Pin	Aurum Gold Coin (15 gr. gold)	MacBook
Award Value:	N/A	€ 750	€ 800
Personally Sponsored BV:	7.000	40.000	80.000
Weaker Leg BV:	N/A	10.000	40.000
Qualifying Terms:	Personally Sponsored 2 x Matching Bonus (x1 in each leg)	Personal Organization 2 x Sapphire (at least 1 in weaker leg)	Personal Organization 3 x Ruby (at least 1 in weaker leg)

# LEADERSHIP PROGRAM: RANKS



Leadership Award:	Diamond Trip	Rolex	Gold Rolex	Special Crown Diamond Award
Personally Sponsored BV:	200.000	500.000	1.500.000	8.000.000
Weaker Leg BV:	80.000	200.000	500.000	1.500.000
Personal Organization:	3 x Emerald (at least 1 in weaker leg)	4 x Diamond (x2 in each leg)	5 x Blue Diamond (at least 2 in weaker leg)	6 x Black Diamond (x3 in each leg)

# RECOGNITION REWARD TABLE



Leadership Badge	Leadership Rank	Leadership Award	Qualifying Personally BV	Qualifying Weaker Leg BV	Qualifying Terms
	Sapphire	Sapphire Pin	7 000		Personal sponsored 2 x Matching Bonus
	Ruby	AGC Coin	40 000	10 000	Personal organization 2 x Sapphire
	Emerald	MacBook	80 000	40 000	Personal organisation 3 x Ruby
	Diamond	Diamond Trip	200 000	80 000	Personal organisation 3 x Emerald
	Blue Diamond	Rolex	500 000	200 000	Personal organisation 4 x Diamond
	Black Diamond	Gold Rolex	1 500 000	500 000	Personal organisation 5 x Blue Diamond
	Crown Diamond	Special Crown Diamond Award	8 000 000	1 500 000	Personal organisation 6 x Black Diamonds



# CROWN DIAMONDS



**JUHA PARIALA:**  
"Duplication is everything!"

**SEBASTIAN GREENWOOD:**  
"Never, ever, ever GIVE UP!"

**PERH KARLSON:**  
"Building strong leaders is the success to all networks!"



# LEADERSHIP PROGRAM: CLAIM YOUR AWARD



- The Leadership Awards recognize your and your team's **monthly** Leadership achievements
- Leadership award calculation: by the **10<sup>th</sup> of each month** the Leadership ranks are updated in the backoffice
- You need to inform us that you will collect your award **by the 20<sup>th</sup>** of the same month your leadership rank gets updated, by sending an e-mail to: [recognition@onecoin.eu](mailto:recognition@onecoin.eu). Remember to include your OneCoin username, the office from which you will pick up the award and the week day when you will pass by to collect it
- Our offices are located in China (Hong Kong), Vietnam (Ho Chi Minh City), Bulgaria (Sofia) and UAE (Dubai). Due to customs regulations we do not ship awards
- If you do not inform us that you will collect your award by the 20<sup>th</sup> of the same month you got your Leadership rank updated, we will credit **80% of the prize value** to your cash account. Note that there is a cash refund only for Ruby and Emerald ranks

# LEADERSHIP PROGRAM: AWARDS



RUBY



EMERALD



DIAMOND



BLUE  
DIAMOND



BLACK  
DIAMOND

SPECIAL CROWN  
DIAMOND AWARD

CROWN  
DIAMOND

# THE BACKOFFICE: LEADERSHIP RANKS



You can see your **CURRENT LEADERSHIP RANK** on the Dashboard in the Backoffice:

The dashboard displays the following information:

- UNTIL NEXT BONUS ROUND:** 5 Days, 1 Hour, 37 Minutes, 58 Seconds
- TOTAL ONE COINS:** 249 248.43
- TOTAL TOKENS:** 0.00
- AGC:** 250.00
- LEADERSHIP RANK:** BLUE DIAMOND
- CASH ACCOUNT:** € 32 878.38
- TRADING ACCOUNT:** 3 983.80
- BONUS EARNED THIS WEEK:** € 6 733.00
- POINTS LEFT:** 9 400
- POINTS RIGHT:** 774 100

A callout box highlights the Leadership Rank with the text: **THIS IS YOUR CURRENT RANK. CLICK ON IT TO ENTER!**

**WELCOME TO OUR NEWEST MEMBERS**

<b>LQX58888</b> China	<b>HELLOROBERT</b> Sweden	<b>DOMENYKO2</b> Romania	<b>QQ370704390</b> China	<b>ZYZ5166</b> China
--------------------------	------------------------------	-----------------------------	-----------------------------	-------------------------


**MARKET** | **LASTEST NEWS** | [Leave a message](#)


# THE BACKOFFICE: LEADERSHIP RANKS



You can see your **NEXT LEADERSHIP MILESTONE** on the Dashboard in the Backoffice:

The screenshot shows the OneCoin Backoffice Dashboard. At the top left is the OneCoin logo. The top right contains flags for various countries, a 'STEEL TRADER €5000' badge, and a profile icon. A navigation menu on the left includes Dashboard, News, Profile, Account, and other options. The main content area displays the user's current rank as 'Black Diamond' (level 5) and the next rank as 'Black Diamond' (level 6). A red callout box indicates the user needs 1,500,000 BV points on the left and right sides, plus 5 more Blue Diamonds, to reach the next rank. A table below shows the requirements for each rank: Sapphire (395), Ruby (60), Emerald (7), and Diamond (4). A yellow callout box explains that fulfilling these qualifications allows the user to move up to Black Diamond next month. The dashboard also shows 'Total BV Points' (4,885,900) and a 'WELCOME TO OUR NEWEST MEMBERS' section with a list of new members.

**YOUR RANK:** 

**NEXT RANK:**  **YOU NEED:** 1 500 000 BV points on Left & Right  
5 more Blue Diamond in your organization

**THIS IS YOUR CURRENT RANK.**

**IF YOU FULFILL THE QUALIFICATIONS, NEXT MONTH YOU CAN MOVE UP TO BECOME BLACK DIAMOND! HERE YOU SEE THE GOALS YOU NEED TO ACCOMPLISH TO MOVE UP!**

Leadership Rank	Sapphire	Ruby	Emerald	Diamond
Requirements	395	60	7	4

WELCOME TO OUR NEWEST MEMBERS

- DOMENYKO1 (Romania)
- WBM51968 (China)
- LYLYH999 (China)
- DOMENYKO1 (Romania)

Leave a message

# THE BACKOFFICE: THE MATCHING TREE



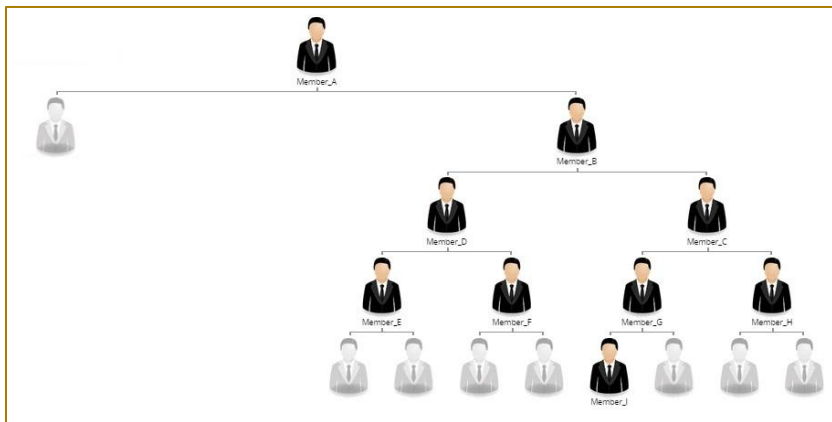
The Matching Tree in the backoffice helps you to see your personal organization

The screenshot shows the ONE COIN backoffice interface. The top navigation bar includes the ONE COIN logo, language flags, and user information (test20). The left sidebar contains a menu with options like Dashboard, News, Profile, Accounts, Shop, My Network, Network tree, Matching, Bonus, Downloads, FAQ, OnePay, Exchange, Buy Aurum Gold Coins, One Academy, Gold Vault, One World Foundation, and CoinVegas. The main content area is titled "Matching tree" and shows a tree diagram. The tree starts with Member\_A, which branches into Member\_B and Member\_C. Member\_B is connected to Member K, L, and M. Member\_C is connected to Member D, E, and F. The interface also includes a "Network tree" button and a "Matching tree" button. A message box at the bottom right says "Leave a message".

# THE BACKOFFICE: THE BINARY & THE MATCHING TREES

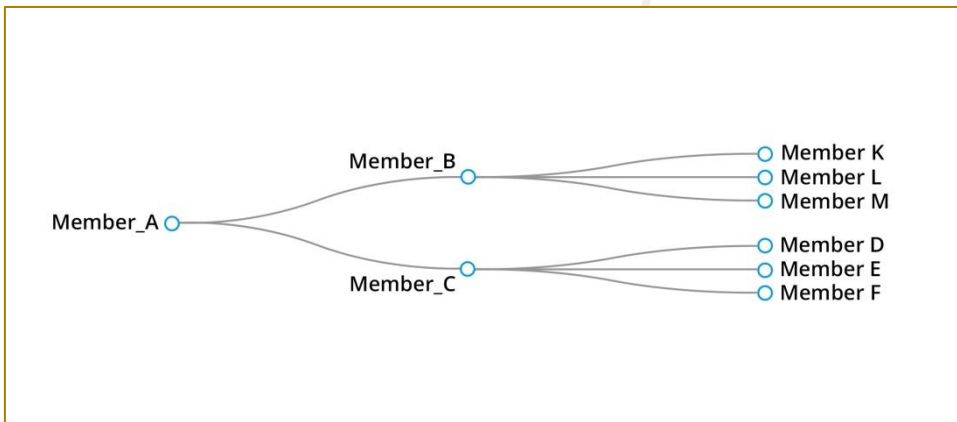


## The Binary Tree



- The Binary Tree: always 2 x 2 members on either side, as the Binary Tree expands
- The Weaker Leg Volume is the one with **the lower BV for the month**, compared to the other leg

## The Matching Tree



- The Matching Tree in the backoffice helps you to see your Personal Organization
- Your Personal Organization consists of all members, you **personally** sponsored

# LEADERSHIP PROGRAM: FAQ



## Q: What is a Leadership rank?

A: Leadership ranks measure your success at OneCoin. Ranks are calculated according to the business volume (BV) generated within the personal organization of each member.

## Q: What is personal organization?

A: A personal organization consists of the members you have sponsored, those they have sponsored and so on, down to the bottom of the tree.

Example for reaching Ruby rank:

Weaker Leg Volume - Member A has sponsored 2 members (Members B and C) and has put them in the weaker leg of his tree. Those 2 members have acquired Tycoon packages  $2 * €5.000 = €10.000$ . This leads to Member A having a Weaker Leg Volume of €10.000.

Qualifying Total Volume – Members B and C have sponsored another 6 members, who have acquired Tycoon package of  $6 * €5.000 = €30.000$ .

This takes the Qualifying Total Volume to a total of €40.000.

Qualification Pin Level – Members B and C have already reached the Sapphire ranking on the previous step.

## Q: What is personal sponsored?

A: Personal sponsored means that you have personally invited and sold an education pack to a member. This new member now belongs to your personal organization.

## Q: How often do the ranks get updated?

A: The leadership ranks get updated every last day of the month. So all accumulated volume and ranks count for the monthly qualification of new leadership ranks.

## Q: How do I receive my award?

A: You can collect your award from one of our offices in China (Hong Kong), Vietnam (Ho Chi Minh City),

# LEADERSHIP PROGRAM: FAQ



Bulgaria (Sofia) or UAE (Dubai). We do not send awards by post.

## Q: When is the Leadership rank calculated?

A: The leadership ranks are evaluated in the beginning of the next month and updated until the 10<sup>th</sup>. You need to check your account and claim your Leadership rank award until 20<sup>th</sup> of each month.

Example: You have covered the leadership qualifications for Black Diamond in June for the period from the 1<sup>st</sup> until the 30<sup>th</sup> of June. Your new rank, Black Diamond becomes visible on your Dashboard until July 10<sup>th</sup>, after we have evaluated your results for June.

You need to claim your Black Diamond award until July 20<sup>th</sup>. You can pick it up in one of our offices in Hong Kong, Dubai, Sofia or Vietnam. If not, you will receive 80% of its value in your cash account. We do not send awards by post.

## Q: What happens if I forget to collect my award in time?

A: If you do not claim your award in time, you will automatically receive 80% of its value in your cash account. Note that there is a cash refund only for Ruby and Emerald ranks

## Q: How do I move from one Leadership rank level to the next?

A: You need to fulfill the qualifications for the level you wish to achieve

Example: You have recently achieved Emerald Leadership rank and your goal is to move to Blue Diamond. You do not need to become Diamond if you fulfill the qualifications listed in the Recognition Reward Table for Blue Diamond next. It's as simple as that!